



Luxand, Inc.

<http://www.luxand.com>

Luxand Blink!

User's Guide

Table of Contents

Introduction	3
Installation	3
Program purchase and registration	7
Configuration	9
How it works	11
Settings.....	13
Uninstall	20
Recommendations	21
Report a bug.....	22

Introduction

Luxand Blink! is a biometric PC access application that enables users to log in to Windows by facial recognition. Your face is captured by the webcam, matched against the registered profile, and identified by the application.

Logging in using Luxand Blink! is remarkably easy. You no longer need to enter a username and password when Windows starts up or is locked; the login process is completely automatic and is based on the biometric data that Luxand Blink! receives.

To run Luxand Blink!, you'll need:

- OS: Microsoft Windows Vista or Microsoft Windows 7
- Video source: DirectShow-compatible webcam connected to your PC
- HDD: Up to 20 Mb of free disk space on the hard drive

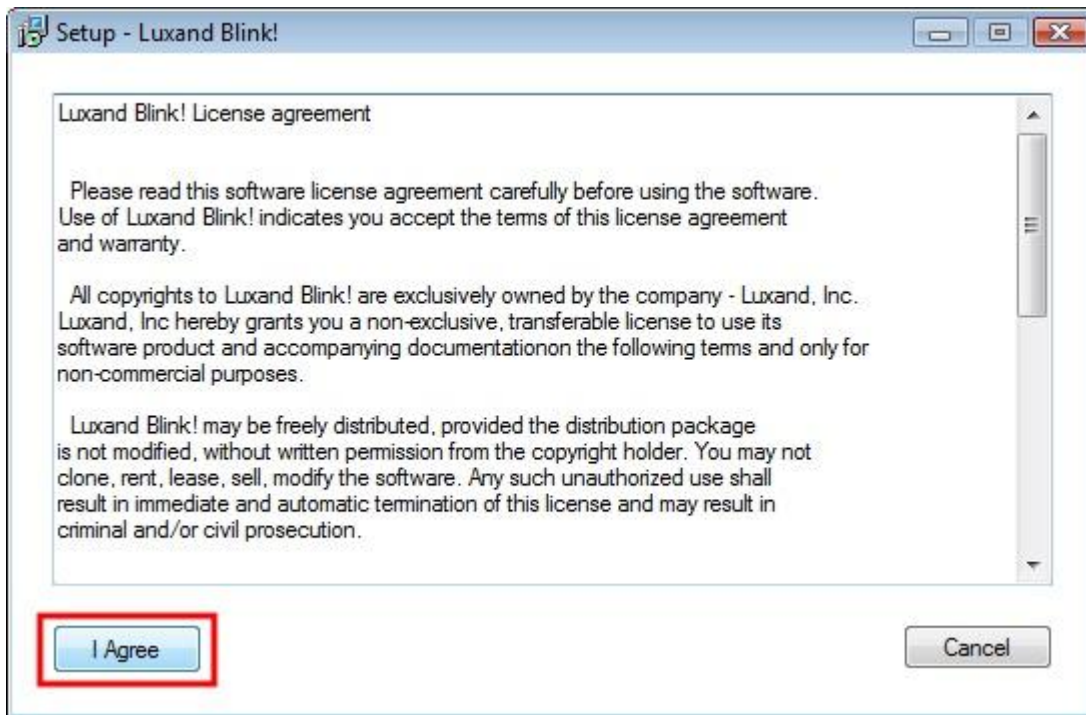
Installation

To install Luxand Blink!, follow the steps below:

1. Double-click **LuxandBlinkSetup.exe** to begin installation.
2. Click **Luxand Blink! License agreement** in the installation window.



3. Read the License Agreement carefully. If you agree to its terms, click **I Agree**.



4. If you want to install **Luxand Blink!** in a different folder, click **Options**. Choose the path to install the program, select the desired **Start** menu folder, and click **OK**.



5. Click **Install Luxand Blink!** to begin installation.



6. Wait until the software is installed into the selected folder.



7. When you are prompted to select the webcam to be used for automatic login, select the desired webcam from the list and click **Apply**.



You can change the default webcam at any time after installation by selecting the **Camera** option in the **Settings** window.

When installation completes, the **Configuration** wizard appears. For more information about this wizard, see [Configuration](#).

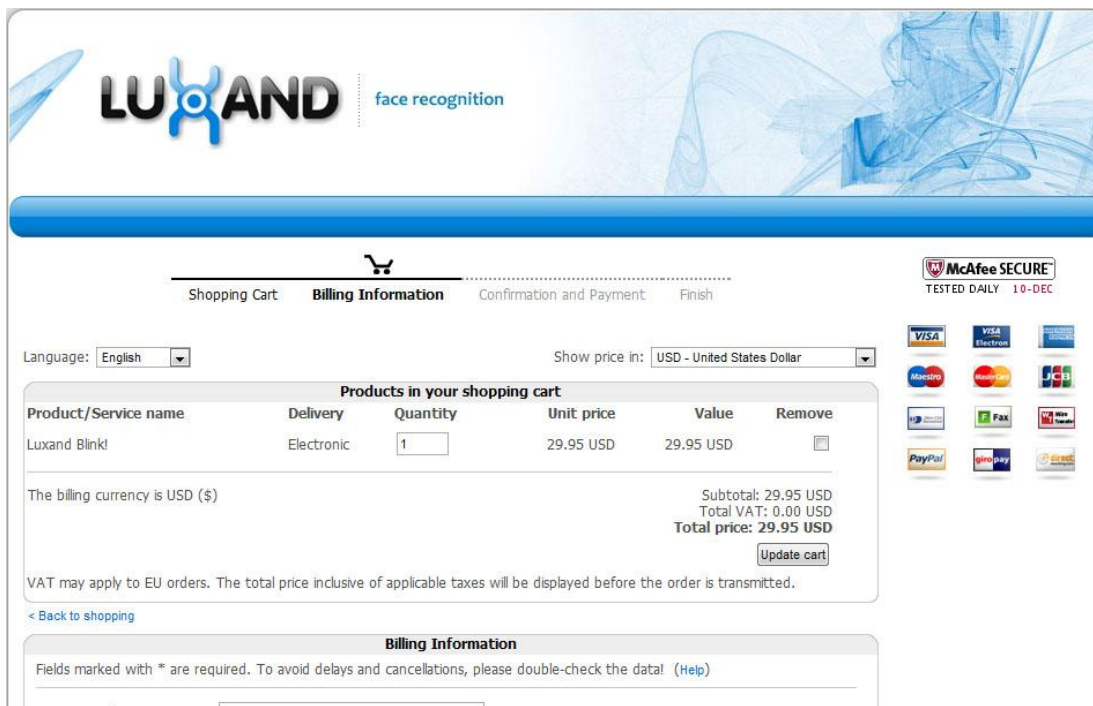
If you have problems or errors during the installation, please contact our [technical support team](#).

Program purchase and registration

The unregistered version of the software allows you to use the program without any restrictions within 30 days. To purchase Luxand Blink!, you must have an active connection to the Internet. Click this link: <http://luxand.com/blink/buynow> or click **Buy Now!** in the **Settings** window.



Select the payment method and fill in all required fields on the Order page.



Once the order is submitted, the download link and the license key are sent to you by email.

Registration

To register Luxand Blink!, you need to enter your user name and the license key that was sent to you by email. In the **Settings** window, click **Enter key...**



In the popup window, enter your user name and license key. Then, click **Register!**



After installation, Luxand Blink! adds its icon to the system tray.



Configuration

After you install Luxand Blink!, the program opens the **Configuration** wizard. This wizard is where you will register your face (that is, have the program “remember” your face) for automatic login to Windows.

To register your face, follow these steps:

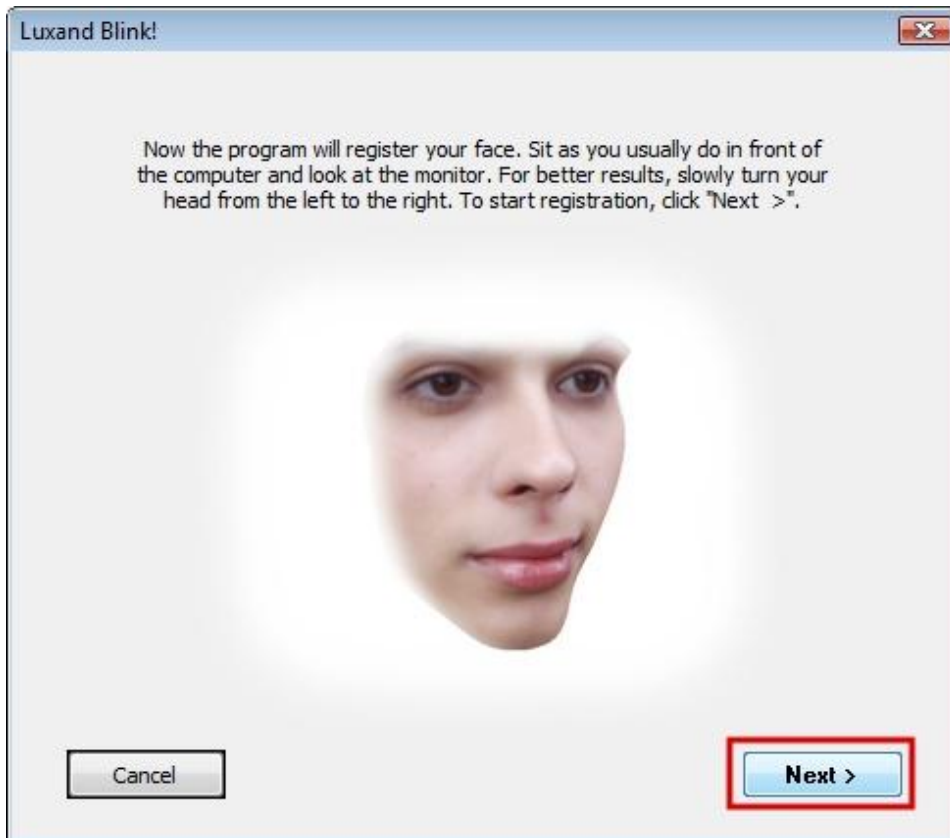
1. In the **Configuration** wizard’s **Welcome** window, do one of the following:

- To register your face now, click **Next** and continue to step 2.
- To close the wizard and register your face later, click **Configure later**.

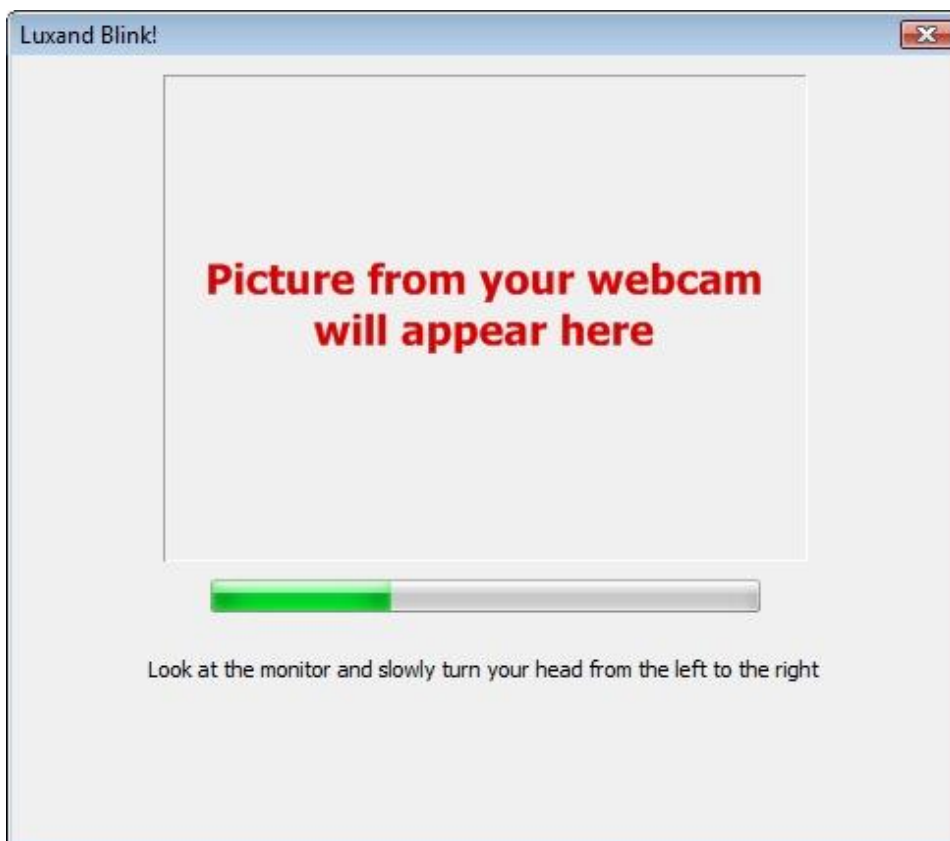
Note: If you do not want to register your face immediately after installation, you can do so later by double-clicking the **Luxand Blink!** icon in the system tray and clicking the **Remember** button. (Important! You must register your face before you can automatically log in to your PC by face.)



2. Read the instruction in the next window carefully and click **Next**.



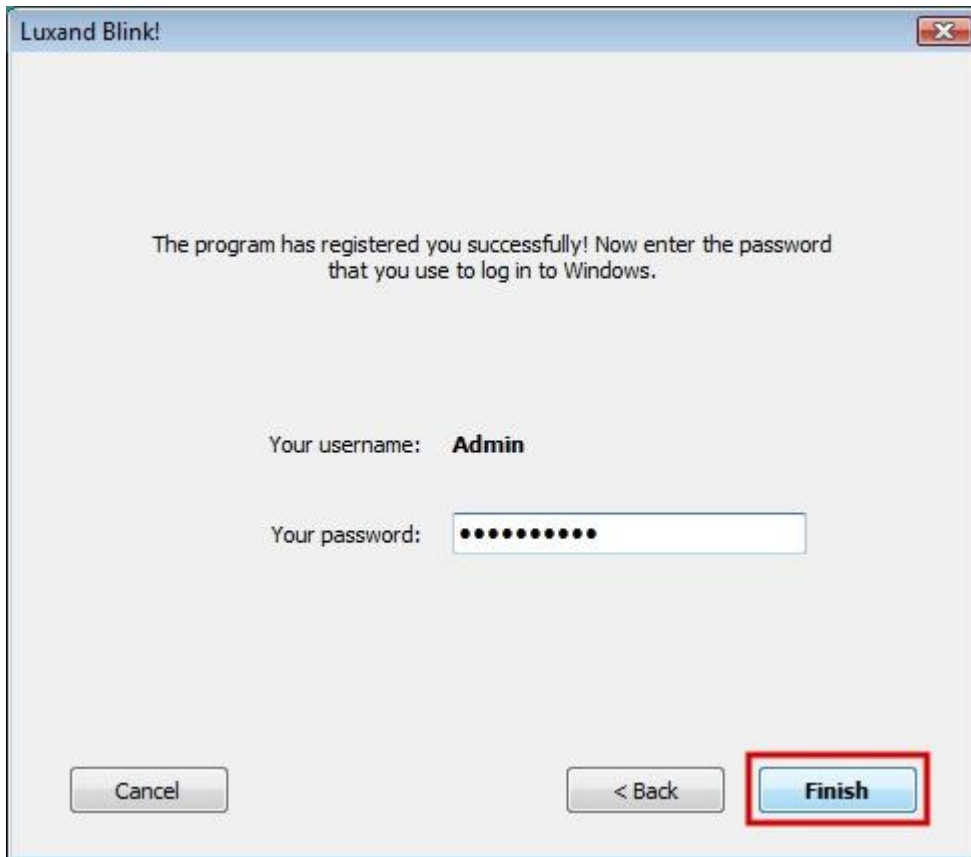
3. The program starts the enrollment of your face. Slowly turn your head to the left and to the right while looking into the monitor.



4. Once your face is registered, the program prompts you for your Windows login credentials and whether you want to enable face locking. Do the following:

a. Type the password for your Windows account.

b. Click **Finish**.



How it works

When your face is registered, you can log in to Windows without having to type anything. Simply look into the webcam and Luxand Blink! logs you in without requiring your username and password.

You can log in by face when the computer is locked, when you resume it from the Standby or Hibernation modes, and when the current user logs off and a new user attempts to log in.

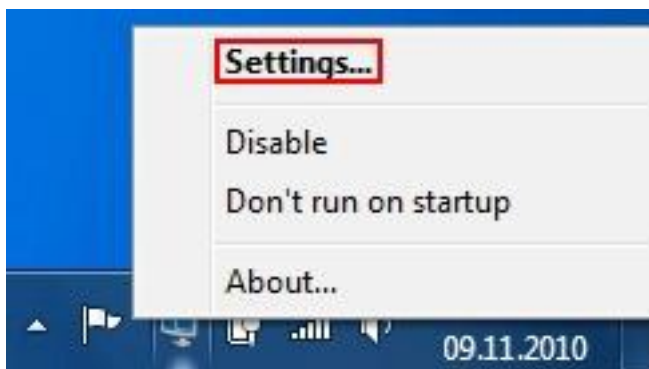


Remember that you can still access your PC using your username and password if you would rather log in that way instead of using the webcam.

After installation, Luxand Blink! adds its icon to the system tray.



By double-clicking the icon, you can bring up the **Settings** window where you can configure different application settings (See: [Settings](#)). You can also open the window by clicking the right mouse button on the tray icon and selecting **Settings**.



To disable automatic face login, click the right mouse button on the tray icon and select **Disable**.

- Double-click the Luxand Blink! icon in the system tray to open the **Settings** window, and then click **Disable**.
- Right-click the Luxand Blink! icon in the system tray and click **Disable**.

When face login is disabled, the tray icon looks like this:



To enable face login again, do one of the following:

- Double-click the Luxand Blink! icon in the system tray to open the **Settings** window, and then click **Enable**.
- Right-click the Luxand Blink! icon in the system tray and click **Enable**.

Settings

If Luxand Blink! is disabled, you can enable it by selecting **Run Luxand Blink!** in the **Programs** menu.

To open the **Settings** window, you can either double-click the Luxand Blink! icon in the system tray or right-click the tray icon and select **Settings**.

The **Settings** window allows you to do the following operations:

1. You can enable or disable face login to Windows. Click **Enable** or **Disable**, respectively.

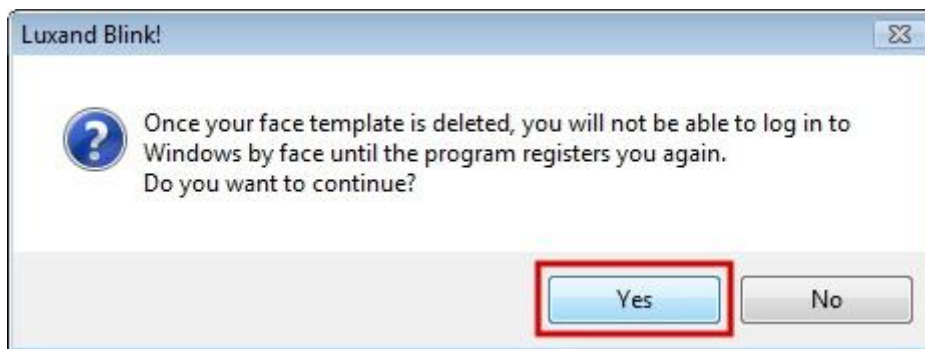


Note: You can also enable or disable face login to Windows by right-clicking the Luxand Blink! icon in the system tray and selecting the appropriate option.

2. You can delete your biometric data. Click **Delete**.



Then, click **Yes** when prompted to continue.



Once your data is deleted, face login is impossible. To enable face login again, you must register your face again.

3. To register your face, click **Remember**.



This opens the **Configuration** wizard. For more information about registering your face, see [Configuration](#).

4. You can also select the camera to use for face authentication. Click **Camera**.



Select a camera, and then click **Apply**.



If you have a new webcam, we recommend that you register your face again.

5. Click **Help** to read the Help file.



6. If you do not want the program to run at Windows startup, click **Don't run**. Note, however, that face login remains enabled.



To run Luxand Blink! at Windows startup, click **Run**.



7. Click **History** to view your computer's login history.



By using the **Login history**, you can view and save photos of people who have attempted to log in to your system. You can also view and save your own login photos.



8. In **High Convenience** mode, Luxand Blink! learns your facial appearance each time you log in. However, this could compromise security if someone else logs in with your password. In **High Security** mode, training is disabled.



9. **Show Diagnostics** helps troubleshoot errors. For more information, see [Report a bug](#).

10. If you have questions or suggestions about the program, click **Give us your feedback**. This opens your default mail client with a preset message to us.



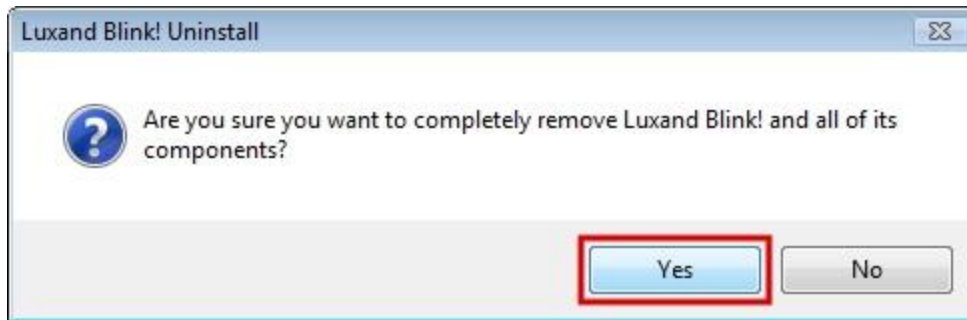
Uninstall

You can uninstall Luxand Blink! from the Control Panel or from the Windows Start menu.

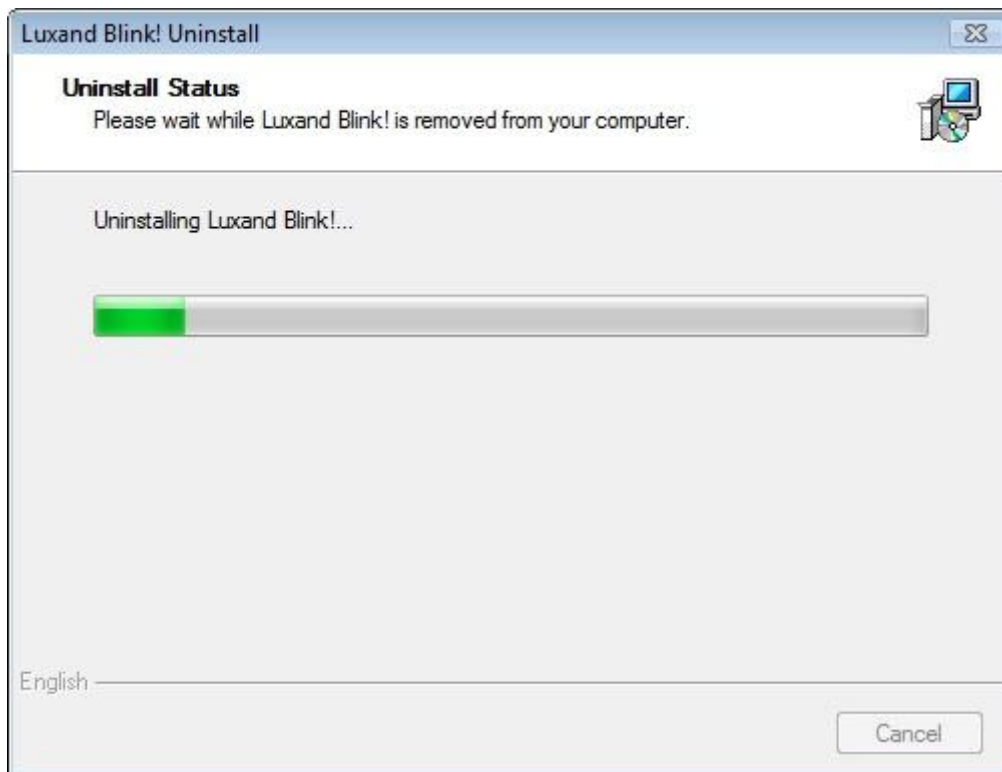
To uninstall Luxand Blink! from the Control Panel, follow these steps:

1. Click **Start**.
2. Click **Control Panel**.
3. Select **Programs and Features**.
4. Select **Luxand Blink!** and click **Delete**.

The Blink! Uninstaller window appears.



5. Click **Yes** to confirm the uninstallation process. The uninstaller removes Luxand Blink!'s files from the computer.



To uninstall Luxand Blink! from the Start menu, follow these steps:

1. Click **Programs**.
2. Select the **Luxand → Blink!** folder.
3. Click **Uninstall Luxand Blink!**.



The Luxand Blink! Uninstaller window displays. Follow the same steps as above.

If you want to reinstall Luxand Blink!, click **LuxandBlinkSetup.exe**. You will be prompted to uninstall Luxand Blink!. Then click **LuxandBlinkSetup.exe** to begin installation.

Recommendations

Follow the recommendations below to ensure error-free performance of Luxand Blink!:

Face registration

When you register your face in the **Configuration** wizard or log in to Windows by face, make sure your face is in the camera frame and no other faces are in the camera's focus. Avoid turning your head at more than a 30-degree angle.

Camera

Different cameras have different optical distortions that may influence face authentication. Therefore, we recommend that you use the same camera for face login that you used to register your face. If you plugged in a new camera, select it in the **Settings** window, delete your current registration data, and register your face again.

Lighting

For better recognition, we recommend homogenous soft lighting. Try to avoid extremely bright light (for example, light from a window or bright lamp), light falling at an angle (for example, light from a table lamp that stands on one side), and poor lighting conditions.

Facial expression

When you register your face or log in, keep a calm expression on your face. Emotional facial expressions (such as laughter, closed eyes, or hair covering your face) can make it difficult, and sometimes impossible, for Luxand Blink! to recognize your face.

If you wear glasses, be aware that recognition can also be hindered by the light reflected from the glasses. Therefore, we recommend that you take off your glasses when you register your face or log in.

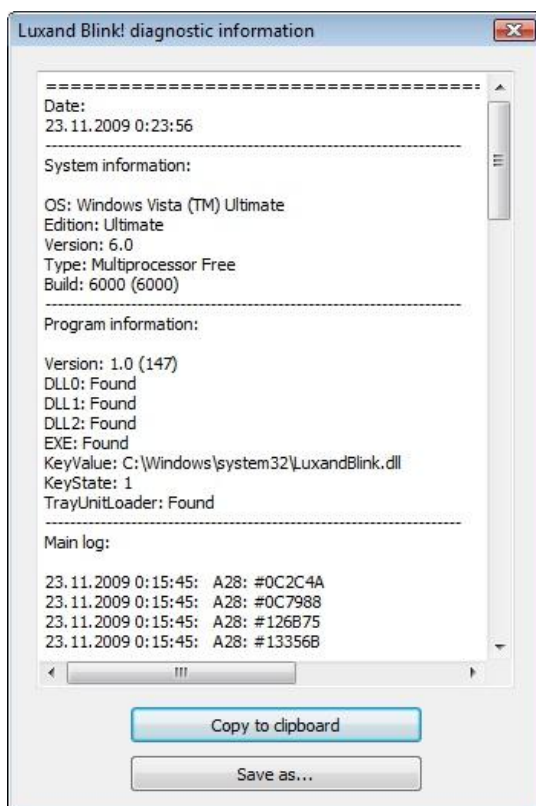
Finally, changes in appearance can influence recognition. If you think your look has changed significantly, you should register your face again.

Report a bug

If you find a bug in the application, you can help us fix it in the next release. In the **Settings** window, click **Show Diagnostics**.



In the resulting window, click **Copy to clipboard** to copy data required for analysis to the clipboard. Paste this information into an email message and send it to support@luxand.com. Or, click **Save as...** and attach the saved file to the email.



In the Subject field of the message, type "Support – Luxand Blink!" (You can open the preset message template in your default mail client by clicking the **Give us your feedback** link in the **Settings** window).